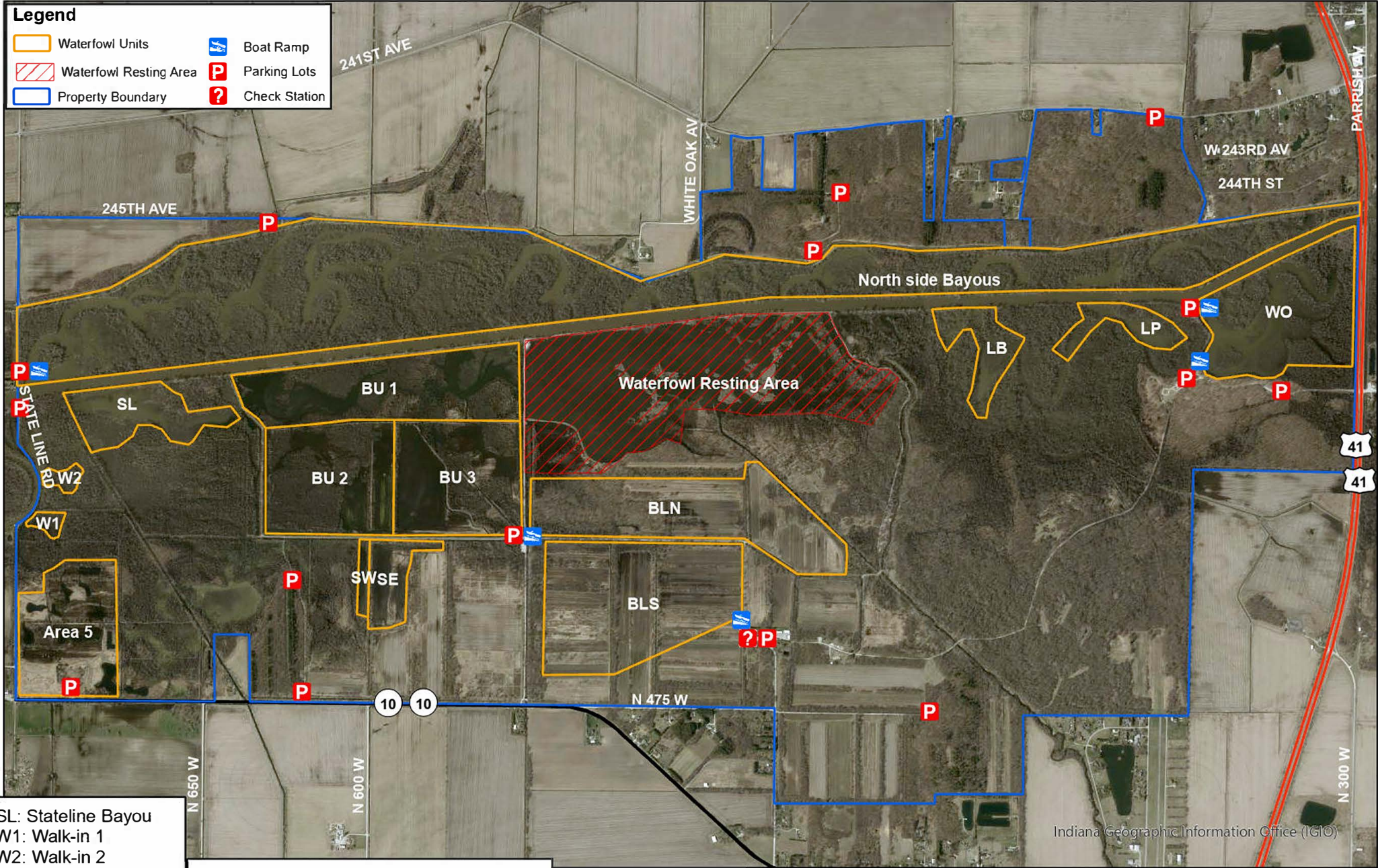


# LaSalle FWA Waterfowl Map

**Legend**

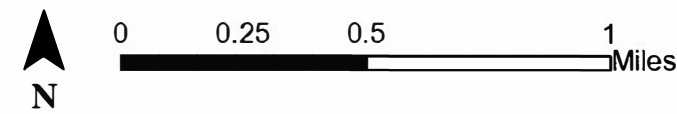
- Waterfowl Units
- Waterfowl Resting Area
- Property Boundary
- Boat Ramp
- P** Parking Lots
- ?** Check Station



Indiana Geographic Information Office (IGIO)

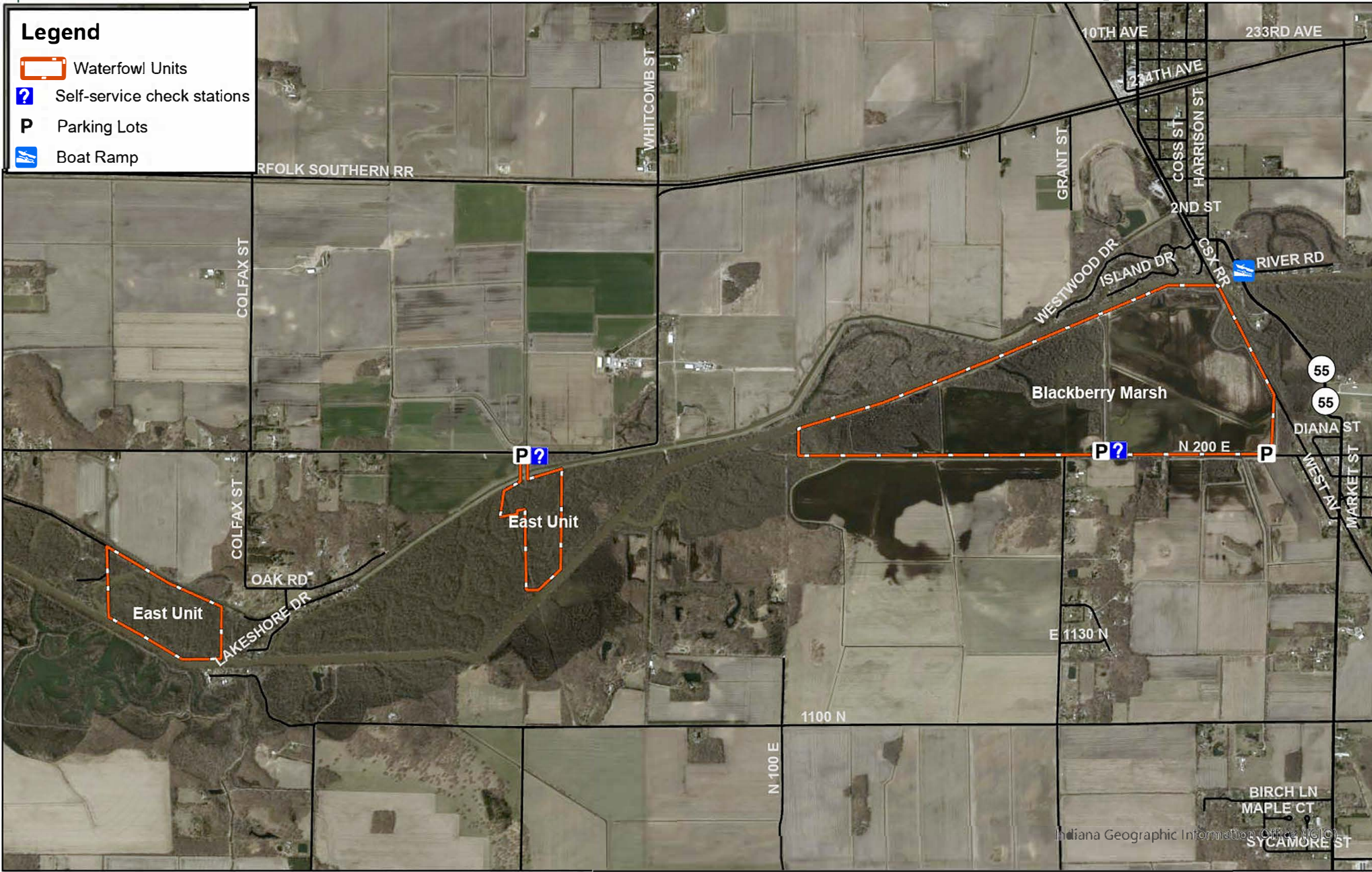
SL: Stateline Bayou  
W1: Walk-in 1  
W2: Walk-in 2  
SW: Stake West  
SE: Stake East  
LB: Lost Bayou  
LP: Lily Pad Bayou  
WO: White Oak Bayou

Baker Unit 1 (BU1): 3 Parties  
Baker Unit 2 (BU2): 3 Parties  
Baker Unit 3 (BU3): 3 Parties  
Black Oak Lowlands North (BLN): 2 Parties  
Black Oak Lowlands South (BLS): 3 Parties





# LaSalle FWA East Unit Waterfowl Map



East Unit: 2 Parties  
 Blackberry Marsh: 2 Parties  
 Hunting in both areas is allocated through the main draw at LaSalle FWA Headquarters.

0 0.25 0.5 1 Miles

**\*All boundaries are approximate.**

**Revised 7/24**